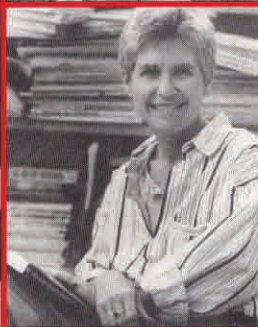
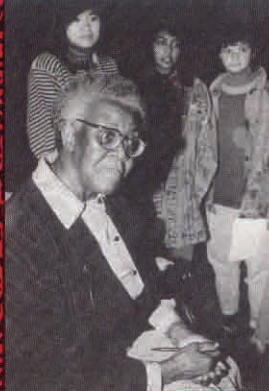


Non Program



IN
WOMEN'S
STUDIES

OUR HISTORY

IN 1986, GRINNELL COLLEGE ENDOWED THE LOUISE R. NOUN PROGRAM IN WOMEN'S STUDIES AND CREATED THE NOUN CHAIR IN WOMEN'S STUDIES.

■ THE PROGRAM BEARS THE NAME OF POLITICAL ACTIVIST, IOWA HISTORIAN, AND CURATOR, LOUISE ROSENFELD NOUN OF DES MOINES, IOWA. NOUN IS THE AUTHOR OF *STRONG-MINDED WOMEN* AND *MORE STRONG-MINDED WOMEN*. SHE GRADUATED FROM GRINNELL IN 1929, AND ALSO RECEIVED AN HONORARY DEGREE FROM THE COLLEGE IN 1973. ■ SINCE ITS INCEPTION, THE NOUN PROGRAM HAS HOSTED FOUR MAJOR CONFERENCES AT GRINNELL, BRINGING TO CAMPUS PROMINENT FEMINISTS, THEORISTS, WRITERS, SCHOLARS, HISTORIANS, JOURNALISTS, EDITORS, SCIENTISTS, ECONOMISTS, AND FILMMAKERS. THE PROGRAM'S GOAL HAS BEEN TO EXPLORE IMPLICATIONS OF THE NEW FEMINIST SCHOLARSHIP, TO INCREASE AN UNDERSTANDING OF INTERNATIONAL FEMINISMS, AND TO EXPLORE WAYS IN WHICH THE STUDY OF WOMEN IS BEING TRANSFORMED BY NEW PERSPECTIVES ON RACE, CLASS, AND GENDER.

■ *On the cover from top left:* Gwendolyn Brooks, Elizabeth Fox-Genovese, Gayatri Spivak, Cynthia Enloe, Florence Howe, Catherine R. Stimpson, J. e. Franklin

WHO WE ARE

The Noun Committee is composed of the Noun Chair and 12 faculty and students representing the four divisions of the college and a number of student organizations, including the Multi-ethnic Coalition, Environmental Studies, Environmental Interest Group, Politically Active Feminist Alliance, Student Organization for Latinas/Latinos, Asian Students in Alliance, and the Student Government Association.

The committee meets quarterly to discuss programming proposals, and to determine priorities for funding. A *Call for Proposals*, which states guidelines and priorities, is issued each fall and spring. Members of the Grinnell community may bring proposals to the committee for consideration throughout the year. Major funding allocations are given at quarterly committee meetings.

OUR RECORD

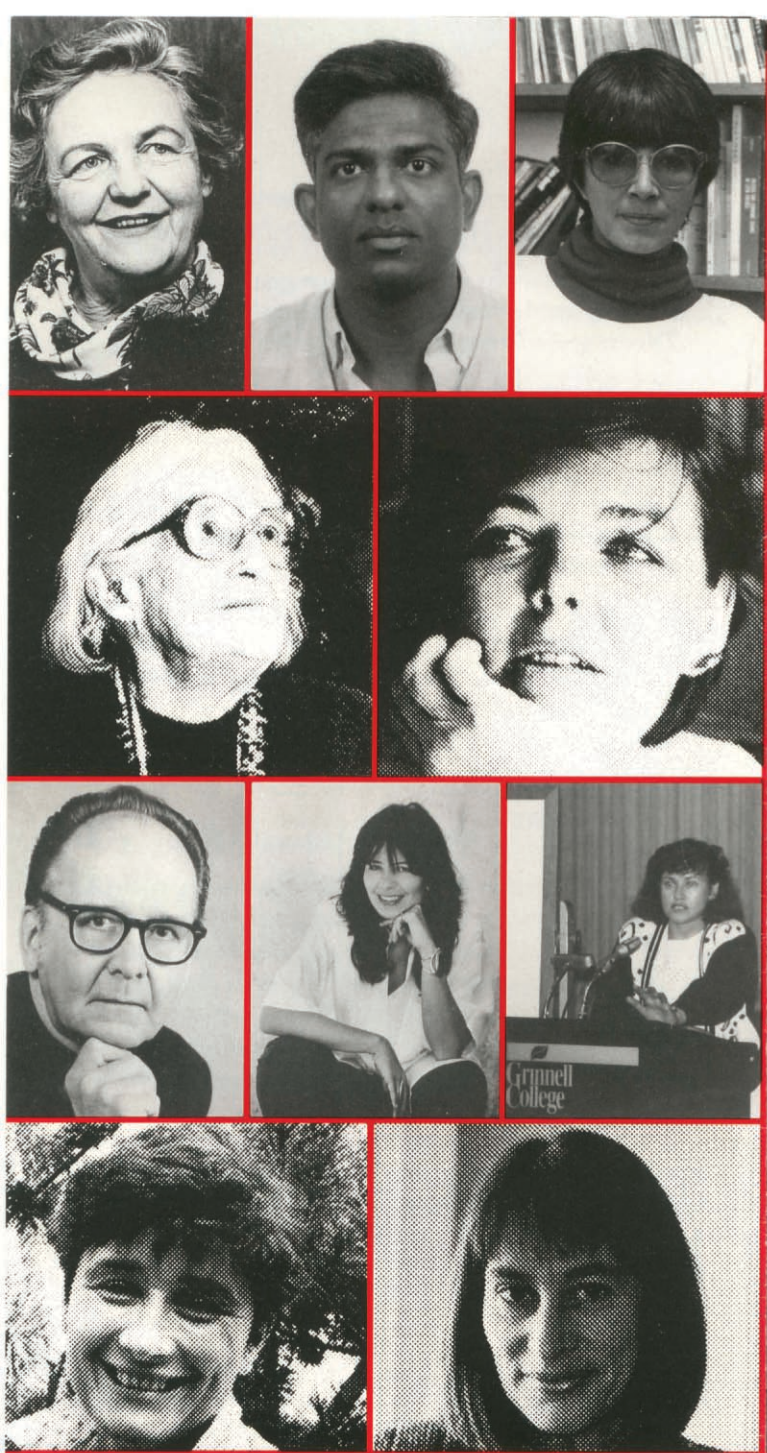
Noun Program participants are proud of the program's activities record. Since its founding, the program has:

- Sponsored influential feminists and international theorists whose work is actively read and discussed on campus. Speakers have included Leila Ahmed, Paula Gunn Allen, Harry Brod, Barbara Christian, Cynthia Enloe, Anne Fausto-Sterling, Elizabeth Fee, Jane Flax, Elisabeth Schussler Fiorenza, Elizabeth Fox-Genovese, Florence Howe, Allison Jaggar, Ann Lane, Maria Lugones, Jane Marcus, Emmanuel Nelson, Father Walter Ong, S.J., Naomi Schor, Ruth Seidel, Dale Spender, Gayatri Chakravorty Spivak, and Catherine Stimpson.
- Sponsored events featuring poets and writers like Gwendolyn Brooks, Olga Broumas, Angela Carter, Mridula Garg, David Lehmann, Heather McHugh, and Jessica Mitford.
- Hosted national conferences and symposia at Grinnell, including *Reading and Writing the Female Body*; *Rethinking the Family from Multicultural Perspectives*; and the student conference, *Celebrating the Associated Colleges of the Midwest: Ten Years of Feminist Inquiry and Leadership*.

- Received state and national grants from the Iowa Humanities Board and GTE's *The Women's Perspective in Science* program.
- Co-sponsored with student groups conferences like *New Directions in Feminism*.
- Helped student groups co-sponsor speakers for Women's History Week and Gay Pride Week.
- Initiated an interdisciplinary faculty reading group called Feminist Seminar, or FEMSEM. The goal is to encourage faculty to re-evaluate and transform their traditional courses and fields of interest.
- Originated activities that helped facilitate passage of a Gender and Women's Studies concentration, which includes faculty colloquia and curriculum development grants, at Grinnell.
- Granted the annual Jeanne Burkle Award to the undergraduate woman who contributes most to the cause of women in both curricular and extra-curricular activities.

Noun Program events and activities are open to the public and are widely advertised on campus and in the Grinnell community, as well as to other campuses. For more information, please write or contact:

- Mary Lynn Broe
Louise R. Noun Professor of
Women's Studies and English
Harry Hopkins House
Grinnell College
Grinnell, Iowa 50112
515-269-3174 or 3175



■ *Above, from top left:* Jessica Mitford, Emmanuel S. Nelson, Maria Lugones, Meridel LeSueur, Jane Marcus, Father Walter J. Ong, S.J., Joy Harjo, Jacie Skelton, Olga Broumas, Naomi Schor